

GRM2 Antibody (C-Term)
Purified Rabbit Polyclonal Antibody (Pab)
Catalog # AP22322b**Specification**

GRM2 Antibody (C-Term) - Product Information

Application	WB,E
Primary Accession	Q14416
Other Accession	P31421
Reactivity	Human
Predicted	Rat
Host	Rabbit
Clonality	polyclonal
Isotype	Rabbit IgG
Calculated MW	95568

GRM2 Antibody (C-Term) - Additional Information**Gene ID** 2912**Other Names**

Metabotropic glutamate receptor 2, mGluR2, GRM2, GPRC1B, MGLUR2

Target/Specificity

This GRM2 antibody is generated from a rabbit immunized with a KLH conjugated synthetic peptide between 681-715 amino acids from the human region of human GRM2.

Dilution

WB~~1:2000

E~~Use at an assay dependent concentration.

Format

Purified polyclonal antibody supplied in PBS with 0.09% (W/V) sodium azide. This antibody is purified through a protein A column, followed by peptide affinity purification.

Storage

Maintain refrigerated at 2-8°C for up to 2 weeks. For long term storage store at -20°C in small aliquots to prevent freeze-thaw cycles.

Precautions

GRM2 Antibody (C-Term) is for research use only and not for use in diagnostic or therapeutic procedures.

GRM2 Antibody (C-Term) - Protein Information**Name** GRM2 ([HGNC:4594](#))**Synonyms** GPRC1B, MGLUR2

Function Dimeric G protein-coupled receptor which is activated by the excitatory neurotransmitter L-glutamate (PubMed:[37286794](#)). Plays critical roles in modulating synaptic transmission and neuronal excitability. Upon activation by glutamate, inhibits presynaptic calcium channels, reducing further glutamate release and dampening excitatory signaling (By similarity). Mechanistically, ligand binding causes a conformation change that triggers signaling via guanine nucleotide-binding proteins (G proteins) and modulates the activity of down-stream effectors, such as adenylate cyclase. May mediate suppression of neurotransmission or may be involved in synaptogenesis or synaptic stabilization.

Cellular Location

Cell membrane; Multi-pass membrane protein. Synapse. Cell projection, dendrite

Tissue Location

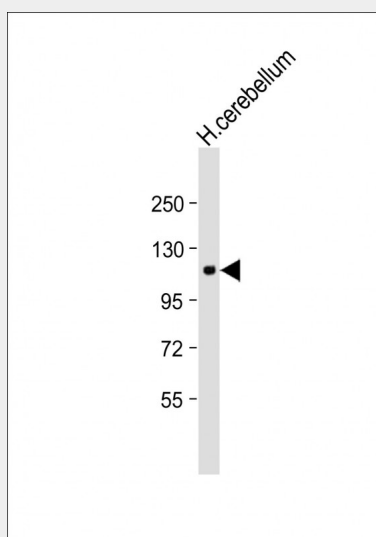
Detected in brain cortex (at protein level). Widely expressed in different regions of the adult brain as well as in fetal brain.

GRM2 Antibody (C-Term) - Protocols

Provided below are standard protocols that you may find useful for product applications.

- [Western Blot](#)
- [Blocking Peptides](#)
- [Dot Blot](#)
- [Immunohistochemistry](#)
- [Immunofluorescence](#)
- [Immunoprecipitation](#)
- [Flow Cytometry](#)
- [Cell Culture](#)

GRM2 Antibody (C-Term) - Images



Anti-GRM2 Antibody (C-Term) at 1:2000 dilution + Human cerebellum lysate Lysates/proteins at 20 µg per lane. Secondary Goat Anti-Rabbit IgG, (H+L), Peroxidase conjugated at 1/10000 dilution. Predicted band size : 96 kDa Blocking/Dilution buffer: 5% NFDM/TBST.

GRM2 Antibody (C-Term) - Background

G-protein coupled receptor for glutamate. Ligand binding causes a conformation change that triggers signaling via guanine nucleotide-binding proteins (G proteins) and modulates the activity of down-stream effectors, such as adenylate cyclase. Signaling inhibits adenylate cyclase activity. May mediate suppression of neurotransmission or may be involved in synaptogenesis or synaptic stabilization.

GRM2 Antibody (C-Term) - References

Flor P.J.,et al.Eur. J. Neurosci. 7:622-629(1995).
Yasuyuki F.,et al.Submitted (JUN-2000) to the EMBL/GenBank/DDBJ databases.
Bonner T.I.,et al.Submitted (APR-2005) to the EMBL/GenBank/DDBJ databases.
Kaighin V.A.,et al.Submitted (DEC-2007) to the EMBL/GenBank/DDBJ databases.
Mural R.J.,et al.Submitted (JUL-2005) to the EMBL/GenBank/DDBJ databases.